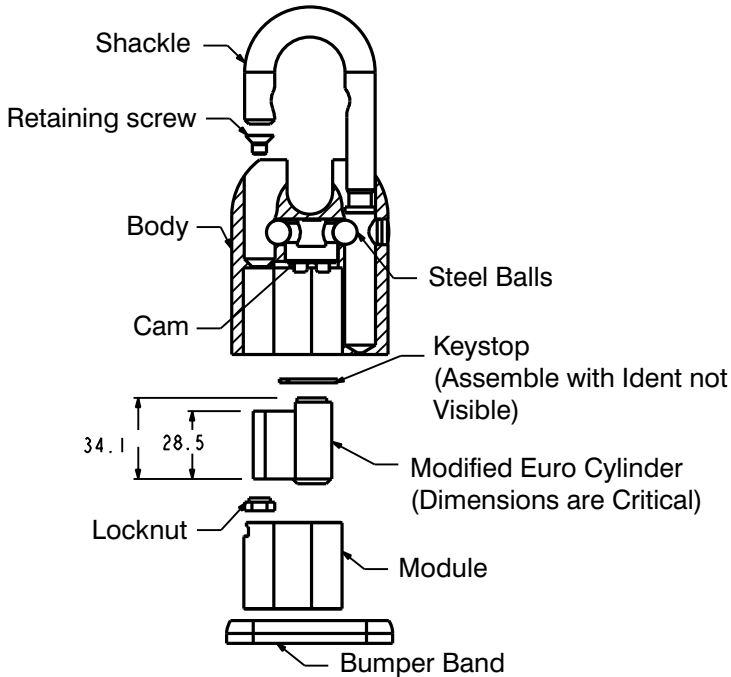
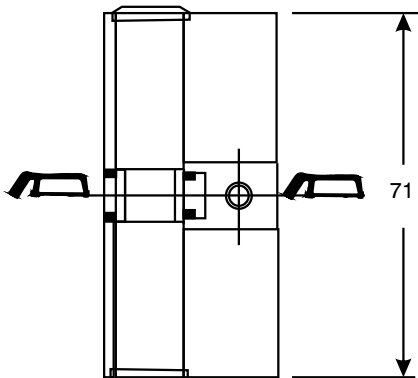


Fitting Instructions - How to modify a europrofile cylinder to fit the SS65E series padlocks

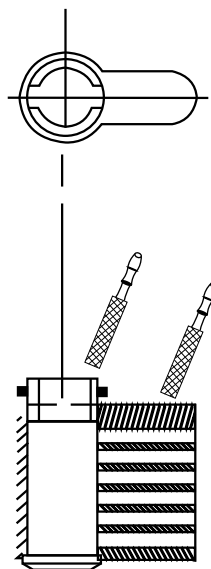


1. Remove module
2. Modify a Euro Cylinder to Dimensions shown and insert into module and then into padlock body.
3. Lock and unlock padlock to ensure correct operation. Insert retaining screw and tighten.

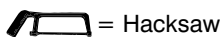
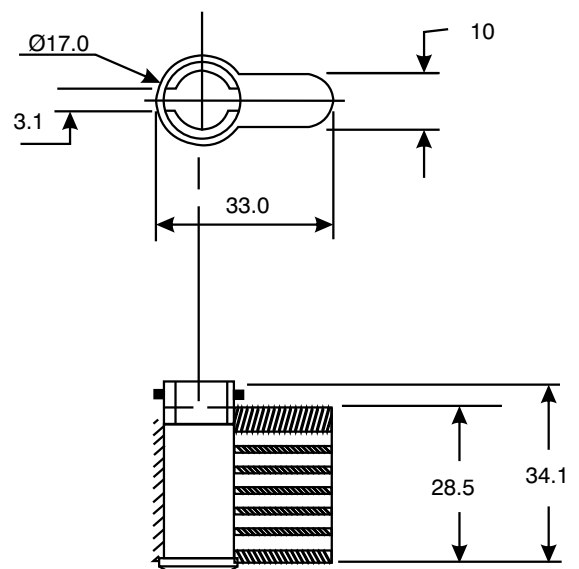
1 A Single or double cylinder can be modified. A 71mm equal sided Double is recommended.
N.B. Remember if you now have two cylinders - more keys may be required.



2 Modify it by cutting and filing



3 The modified cylinder should have these dimensions which are critical



All Dimensions in Metric