

## Hi Security CEN grade Padbars

Built to stringent BS EN 12320 European Security Standards with CEN ratings 4-6, Squire's **Stronghold**® padbars provide maximum security against attack. Their heavy-duty construction provides a total security solution as part of SQUIRE'S extensive range of **Stronghold**® hi-security products.

Tested to BSEN12320 - CEN 6 and 4



**Hardened special cast material - extremely strong**  
**Easy to fit**

**Hardened rotating staple for extra resistance to attack**



STH1 Padbar

### STH1 Padbar - CEN 6 - Hardened

These ultra-strong padbars are made of special hardened casting with a specially toughened hasp attachment plate and staple. The staple is ideal for a 12.7mm shackle and the STH1 is recommended for use with the SS65S and SS65CS closed shackle range. Look for the padbar with the gold lens. **Easy to fit.**



**Special cast material**

**Easy to fit**

**Hardened rotating staple for extra resistance to attack**

STH2 Padbar

### STH2 Padbar - CEN 4

Like the STH1, this heavy duty padbar has a robust casting for the hasp attachment plate and staple. Equally, the staple is designed to work with the 12.7mm shackle and the STH2 is recommended for use with the SS50 **Stronghold**® range. Look for the padbar with the silver lens. **Easy to fit.**

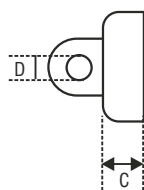
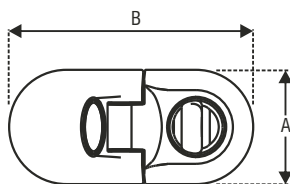


STH1 or 2 Padbar can be fitted flush or at right angles

### Recommended for

Perimeter gates, warehouse, internal doors, external doors, gates and storage areas.

## Dimensions



Model Number	Body Width (mm)	Overall Length (mm)	Body Thickness (mm)	Accommodates Shackle Diameter (mm)	Material	Hardened	Finish	CEN
	A	B		D				
STH1	86.0	184.0	32.0	12.7	SG Cast Iron	Yes	Black powder coated	6
STH2	86.0	184.0	32.0	12.7	SG Cast Iron	No	Black powder coated	4