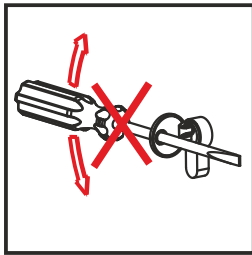
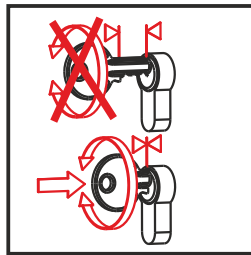




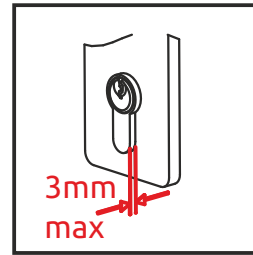
Instructions for using - Stronghold® security cylinders



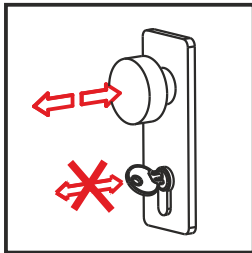
Do not try and force the key with tools (pliers, molegrips) etc.



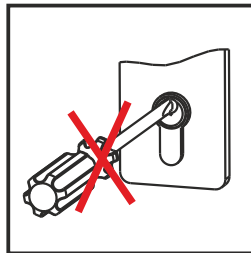
Always make sure that the key is fully inserted before turning.



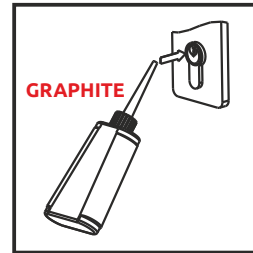
Cylinder face may only protrude a maximum of 3mm from fitted door furniture.



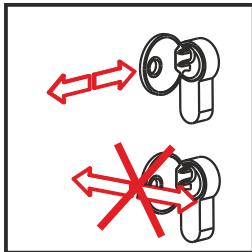
Do not use the key head as a door knob.



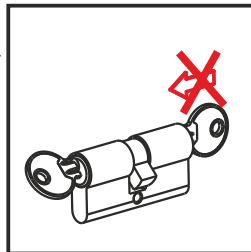
Only insert the proper key into the keyway, do not use any other tool or object.



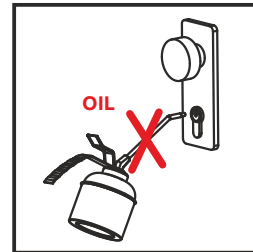
Maintain the cylinder regularly (2 time/year) by applying graphite.



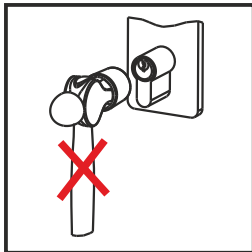
Try not to use sideways force when inserting or pulling out the key.



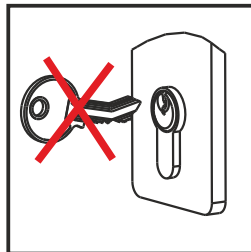
Do not try and turn the cylinder with both keys inserted at the same time.



Do not use any oil based product to lubricate the cylinder.



Do not force the cylinder into the lock body.

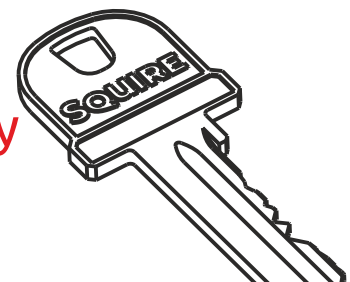


Do not insert bent or broken keys.



Always use genuine Squire Stronghold keys to operate the cylinder to maintain the warranty.

The Squire key



Henry Squire & Sons Limited

Hilton Cross Business Park, Cannock Road, Featherstone, Wolverhampton, WV10 7QZ

Tel: 01902 308050 Fax: 01902 308051 E-Mail: info@henry-squire.co.uk Website: www.squirelocks.co.uk