



## Fitting Instructions - STH1 and 2

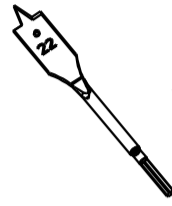
### Recommended tools



30mm A/F  
spanner  
2 required



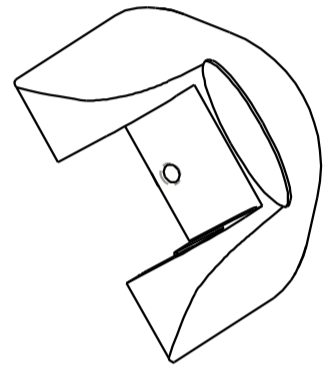
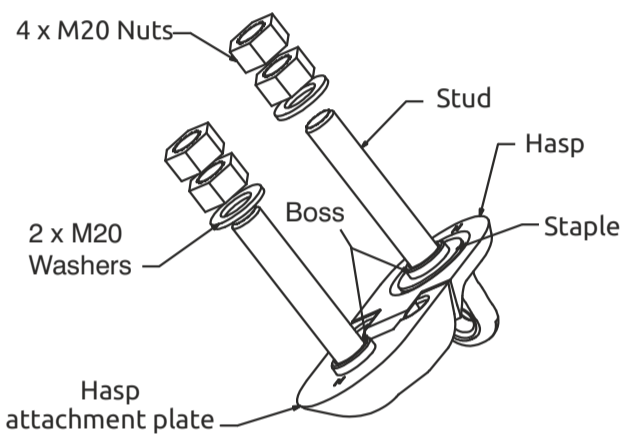
32mm Flat  
wood bit



22mm Flat  
wood bit

**Fig. 1** Not to scale

**Fig. 2** Not to scale



### Fitting Instructions

**1.** Cut out the template below and after choosing which way round you wish to attach the pad bar, tape the template to the doors in its correct position. Using the tip of the  $\text{\O}32\text{mm}$  flat wood bit make a small impression through the template in the doors on the hole centres. Remove the template and drill two  $\text{\O}32\text{mm}$  holes approximately 10mm deep.

**2.** Drill a  $\text{\O}22\text{mm}$  hole in both locations through the door.

**3.** The hasp attachment plate and the staple are designed to rotate freely when the pad bar is open,

allowing the hasp to hang down so as not to obstruct. Bear this in mind when carrying out instructions 4 and 5.

**4.** Referring to fig. 1, push the studs of the hasp attachment plate and the staple into the door holes until the bosses nestle in the counterbored holes. Loosely attach the washers and one nut per stud.

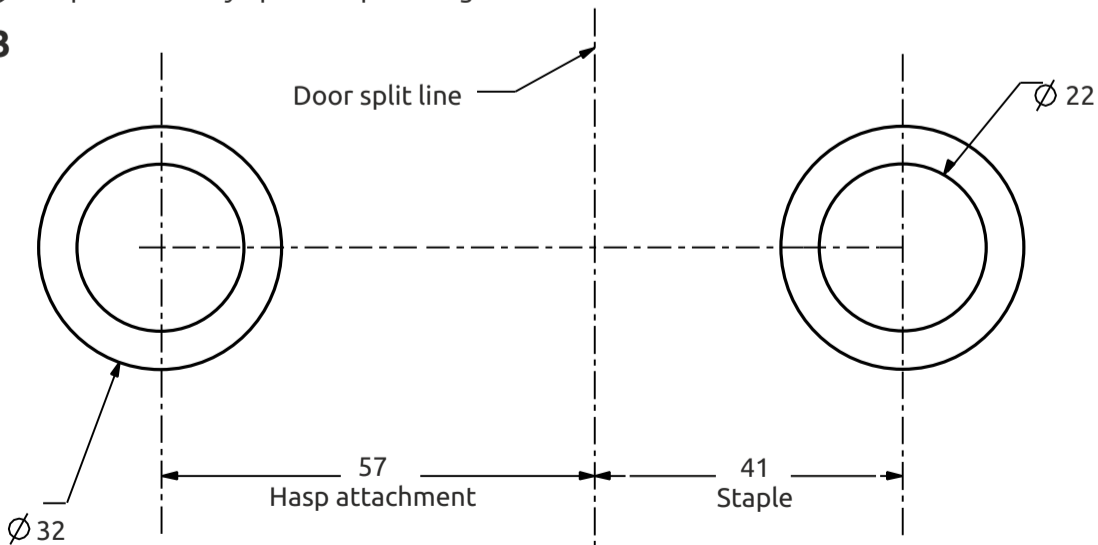
**5.** Tighten the nuts allowing the hasp attachment plate and the staple to turn freely. Attach the final two nuts and lock firmly onto the first nuts.

**6.** For safety: cut off excess stud length after fitting both nuts. Finally, remove any sharp edges.

### Drill Template

Template this way up for staple on right hand door.

**Fig. 3**



Template this way up for staple on left hand door

**Henry Squire & Sons Limited**

Hilton Cross Business Park, Cannock Road, Featherstone, Wolverhampton, WV10 7QZ

Tel: 01902 308050 Fax: 01902 308051 E-Mail: info@henry-squire.co.uk Website: www.squirelocks.co.uk