



product specification

inigma™ Key Fob

Inigma Features

- Full audit trail
- Bluetooth connection to smartphone
- Multifunction LED light providing information for user
- Can access a wide range of locks
- One inigma key fob can access multiple locks
- Long battery life and fully rechargeable
- Lost or stolen keys can be easily deactivated
- Easily synchronises with inigma app

Device features

- Stainless steel key blade
- ABS plastic key cover



Specification

| Code | Dimensions mm | | | | Barcode |
|------------|---------------|----|----|----|---------------|
| | A | B | C | D | |
| INIGMA KEY | 35 | 56 | 65 | 14 | 5012245041842 |



KM724679





product specification

inigma™ system

Inigma overview

Inigma is a smart wireless access control system using BLE communication. Access to inigma Bluetooth devices is controlled via the downloadable inigma app, operating on both Android and Apple iOS devices and via the inigma website, which provides access to your account on your pc. Inigma uses AES-256-bit end to end encryption ensuring the highest level of security. You can control which locks users can access and when, and easily grant and revoke access. A clear audit trail of all device interactions can be viewed via the inigma app and website.

The inigma key fob

The inigma key fob is used to open inigma keyed locks that do not have BLE capability such as inigma cylinders and padlocks. The mobile application communicates with the inigma key fob, and the inigma key fob is then used to power and communicate with the keyed locks.

The connection between the key fob and the lock is galvanic via a three wire disconnectable interface. When the key fob is introduced to a lock, it is automatically activated and communication between the lock and key fob takes place. If access is granted, the light on the key fob illuminates green and the key fob can be turned. If access is denied, the light on the key fob illuminates red and the key fob cannot be turned.

Charging the inigma key fob

Connect the charger to the mains using a Micro USB cable, insert the key fob into the charger and turn to the right to secure in place. The key fob's LED will illuminate to confirm power is connected and will display an amber LED to indicate charging. A green LED indicates when the key fob is fully charged and a full charge takes about 40 minutes.



Synchronising

Open the inigma app on your mobile device and ensure Bluetooth is activated. Go to the **activate** screen by selecting activate from the bottom menu. Holding the inigma key fob vertically, double tap the top of the fob to wake it (an amber LED is displayed) and tap the activate button in the centre of the screen. The inigma app scans for the key fob and once connected the key fob and the app synchronise. The inigma key fob is updated with any new configurations and the app receives audits.

Control users

Assign inigma key fobs to other trusted users who can then access inigma locks delegated or shared with them. Key fobs can be easily unassigned and reassigned to other users with scheduled access set via valid from and to dates.

Validity

Validity provides a further layer of security for the user and is designed to limit the damage caused by lost inigma key fobs or smartphones. Validity, set to 1 day by default but can be edited in increments from an hour to up to 4 weeks. Just synchronise your key fob with the inigma app and validity is renewed. When a device's validity is expired, then access will always be denied. The inigma app displays the validity of all devices using coloured ribbons.

Interoperability

Easily activate interoperability via the inigma app or website to enable an inigma key fob to access locks owned by other users. When interoperability is activated on the key fob, any locks owned by others that have been delegated or shared with the user, can be accessed providing interoperability has been activated on the locks too. This means that one key fob can access locks owned by others without the need for a second key fob.



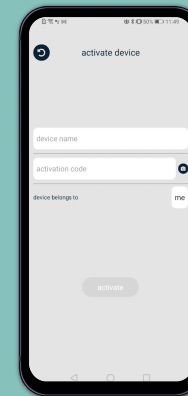


product specification

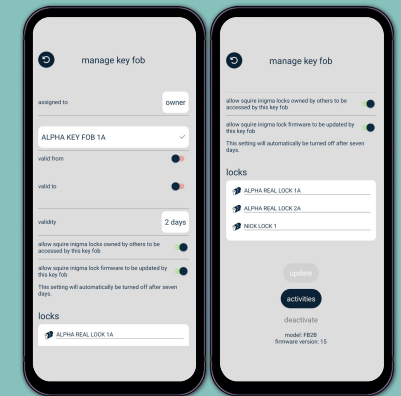
inigma™ system

Adding an inigma key fob to your account using the inigma app

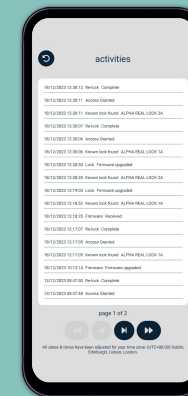
1. Ensure the key fob is charged for at least 20 minutes before activating it on your account.
2. Activate Bluetooth on your mobile device.
3. Download the inigma app and create an inigma account.
4. Sign into your inigma account.
5. Select the **devices** option from the bottom menu bar.
6. Click the **+add** icon in the top right of the screen.
7. Select option to add a powered Bluetooth device to your account.
8. Hold the key fob vertically and wake up the fob with a double tap; a solid amber light is displayed.
9. Ensure the key fob is close to your mobile device.
10. Click the **activate** button in the centre of the app screen.
11. The app will scan for your key fob and display **“found new device”**.
12. Click **activate**.
13. Complete device name field and enter the activation code supplied as a QR code with the key fob.
14. Click **activate**.
15. Once activation is completed, the key fob is displayed in the devices grid.



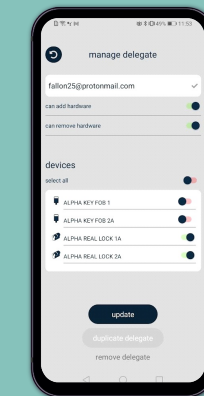
Activate key fob



Manage key fob



Activities



Add a delegate





Basic Guide to Key Fob Lights & Sounds

Version 1.0
Prepared by Maria Wilson
Henry Squire & Sons Ltd





Basic Guide

to Key Fob Lights and Sounds

Basic Guide to Key Fob Lights and Sounds

The inigma key fob has a range of light sequences and sounds that indicate its status:

Not In Use

- No light = asleep

At Any Time

- Cycle red, amber, green rapidly = battery lock out mode – you must charge the key fob as the key fob will be locked out

In a Charger

- Slow amber fade in-out = battery charging
- Slow green fade in-out = battery charged

In a Cylinder

- Two short green flashes with beeps = lock access granted
- One short red flash with beep = lock access denied
- 5 short red flashes with beeps = expired validity – you must synchronise the key fob with the app
- Flash amber rapidly = battery low warning, displayed after the key fob has interacted with a lock – you must charge the key fob
- Continuous rapid red flashing with beeping = key fob lockout mode – affected lock must be locked before the key fob can be used in another lock, synchronise the key fob with the app to identify which lock it is
- Continuous amber light = cylinder firmware update waiting to be sent to lock – you must be familiar with the firmware update process to continue, or wait until the light goes out and continue without updating the firmware

After Double-Tap Wake

- Steady amber = key fob ready to synchronise with the inigma app
- Short pulse amber = message transfer from key fob to inigma app during fob synchronisation

When Dropped

- Long amber flash mostly on = dropped key fob detection, accompanied by a rapid alarm for about 12 seconds – synchronise the key fob with the app to renew the key fob's validity

